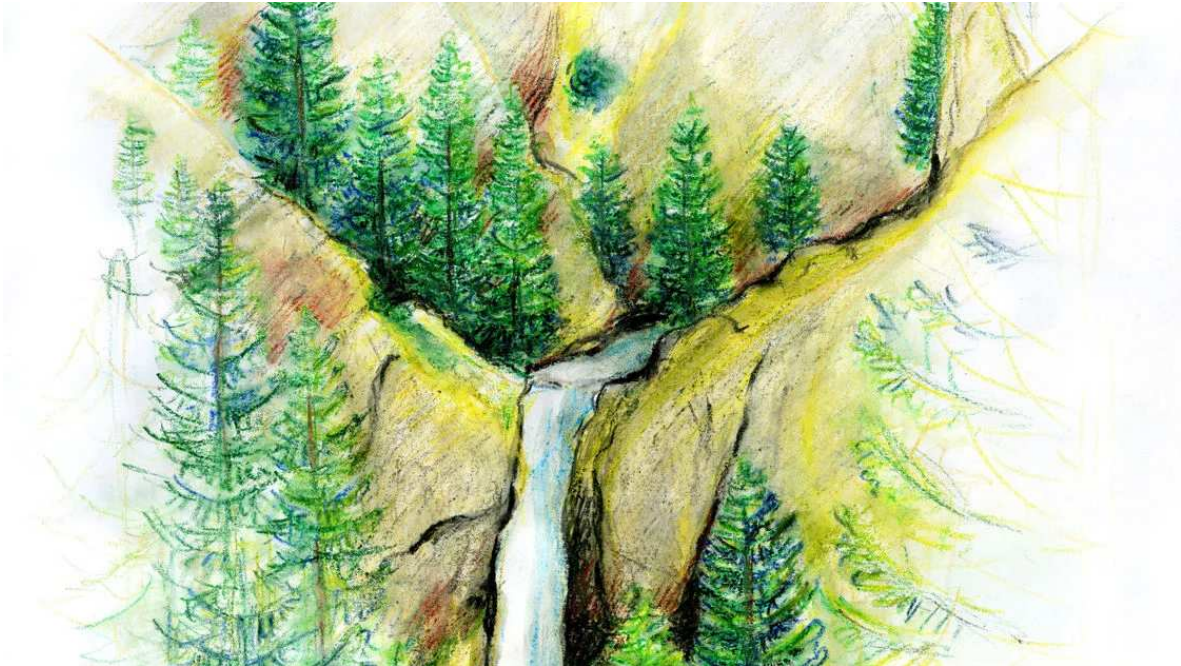




Drawing waterfall with watercolour crayons



A breathtaking natural phenomenon.

This waterfall will bring life to every interior and lend it a breathtaking atmosphere. Use Design Journey products to create a waterfall crashing spectacularly into the depths below, and bring a little beauty to the sometimes grey reality of everyday life.

Step-by-step tutorial



1

First, sketch in the outlines of the trees and the mountains roughly in light brown. Position your waterfall in the centre of the picture.

2

Second, colour in the mountain backdrop, using little lines in different shades of green for the trees. Use a medium shade of blue for the waterfall, but leave a few places clear so that you can achieve a nice watercolour effect later. Use earthy tones for the mountains. Here too, leave some areas clear. Create depth by using darker tones in some places.



3

Finally, use a thin brush to add a little water to the waterfall and the edges of the mountains, creating the watercolour effect. When it's all dry, create shadows around the waterfall and beneath the trees using darker shades. Add as many trees as you like to your picture and here, too, use water to gently soften some of the lines.

Material overview



What you need

Product	Article no.	Quantity
STAEDTLER® 223 Watercolour crayon - Cardboard box with 24 crayons in assorted colours	223 C24	1
STAEDTLER® 989 Synthetic brush - Blistercard containing 3 brushes: #2 round, #8 round, #8 flat	989-SBK3-3	1

Additionally required:

kitchen paper, watercolour paper